



**ALMA
GRANITE**

**STONE FABRICATION
& CABINETRY**

2025 CATALOG

ENJOY 10% MORE

ENJOY 10% MORE

ENJOY 10% MORE

ENJOY 10% MORE

100% CAT

01.

▪ MISSION
PAGE 01

▪ DISTRIBUTION
PAGE 03

▪ FEATURE.ADVANTAGE.BENEFIT
PAGE 07

▪ WARRANTY
PAGE 73

ABOUT US

02. COLLECTION

▪ CABINET DOOR
PAGE 05

▪ BEVEL BLUE
PAGE 09

▪ BEVEL GREEN
PAGE 13

▪ BEVEL WHITE
PAGE 17

▪ SHAKER LIGHT GREY
PAGE 21

▪ SHAKER WHITE
PAGE 25

▪ SHAKER NATURAL
PAGE 29

▪ SHAKER DRIFTWOOD
PAGE 33

▪ COUNTERTOP
PAGE 36

▪ DISPLAY KIT
PAGE 38

03. FRAME CABINET

▪ BASE CABINET
PAGE 40

▪ END&CORNER BASE
PAGE 44

▪ BATHROOM VANITY
PAGE 46

▪ WALL CABINET
PAGE 50

▪ FRIDGE TOP CABINET
PAGE 53

▪ WALL CORNER CABINET
PAGE 54

▪ GLASS DOOR CABINET
PAGE 56

▪ WALL END CABINET
PAGE 59

▪ TALL PANTRY CABINET
PAGE 60

▪ MICROWAVE CABINET
PAGE 62

▪ SPECIALTY ACCESSORY
PAGE 63

▪ PANEL
PAGE 68

▪ TRIM & MOLDING
PAGE 70



DT.
DISTRIBUTION
— TERRITORY

WE SHIP TO **75%** of US POPULATION WITHIN **1** DAY



CD

DOOR

- High density fiber /solid wood door frame
- Medium density fiber door core
- 6-way adjustable hinge with soft close feature

DRAWER

- 3/4" dovetail drawer box with insert stopper
- Undermount full extension
- Soft close drawer glides

BOX

- 3/4" x 1-1/2" hardwood face frame
- 3/4" thick back panel with pre-drill pocket
- UV coated natural plywood interior bottom
- 3/4" thick, 18" deep shelf with metal shelf pin
- 5/8" thick premium grade plywood side panel

FINISHING

- Available Color:
Blue
Green
Light Grey
White
Natural Wood
Drift Wood

BB.

BEVEL BLUE

COLOR

NAVY BLUE

FRAME MATERIAL

HDF

CORE MATERIAL

MDF



BW.

BEVEL WHITE

COLOR

WHITE

FRAME MATERIAL

HDF

CORE MATERIAL

MDF



BG.

BEVEL GREEN

COLOR

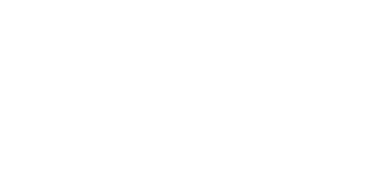
GREEN

FRAME MATERIAL

HDF

CORE MATERIAL

MDF



SW.

SHAKER WHITE

■ **COLOR**
WHITE

■ **FRAME MATERIAL**
HDF

■ **CORE MATERIAL**
MDF



SN.

SHAKER NATURAL

■ **COLOR**
NATURAL

■ **FRAME MATERIAL**
SOLID WOOD

■ **CORE MATERIAL**
MDF + BIRCH VENEER



SLG.

SHAKER LIGHT GREY

■ **COLOR**
LIGHT GREY

■ **FRAME MATERIAL**
HDF

■ **CORE MATERIAL**
MDF



SD.

SHAKER DRIFTWOOD

■ **COLOR**
DRIFTWOOD

■ **FRAME MATERIAL**
SOLID WOOD

■ **CORE MATERIAL**
MDF + BIRCH VENEER





ORDERING

SUPPORTING



ASSEMBLE

LEAD TIME



SIDE PANEL

STRUCTURE

BETTER FEATURE ADVANTAGE — BENEFIT

FEATURE ADVANTAGE BENEFIT





BB.

BEVEL BLUE

▪ **AVAILABLE COLOR**

BLUE
GREEN
WHITE

▪ **MATCHING STYLE**

BB + BW
BB + BG





* Pictures are for illustrative purposes only.

BBBEV.E

■ DESCRIPTION

The BEVEL Blue style is the epitome of sophistication and versatility. The deep, rich shade of blue brings an air of timeless elegance to kitchens and living spaces, offering a modern twist on a classic color. The color choice brings a modern edge to classic designs, creating a space that feels both sophisticated and up-to-date.

■ SPECIFICATIONS

- 3/4" Thick Back Panel With Pre-drill Pocket
- 5/8" Thick Premium Grade Plywood Side Panel
- Undermount Full Extension Soft Close Drawer Glides
- 3/4" Thick, 18" Deep Shelf With Metal Shelf Pin
- UV Coated Natural Plywood Interior Bottom
- 5/8" Plywood with Coated Matching Exterior Toe Kick
- 3/4" Dovetail Drawer Box With Insert Stoppers
- 6-Way Adjustable Hinge With Soft Close Feature
- 3/4" x 1-1/2" Hardwood Face Frame

BG.

BEVEL GREEN

■ AVAILABLE COLOR

BLUE
GREEN
WHITE

■ MATCHING STYLE

BG + BB
BG + BW





BGG BEVE

DESCRIPTION The BEVEL Green represent a harmonious fusion of classic sophistication and nature's timeless beauty. The muted and tranquil hue of green exudes a sense of tranquility and rejuvenation, making it a popular choice for kitchens and living spaces.

SPECIFICATIONS

- 3/4" Thick Back Panel With Pre-drill Pocket
- 5/8" Thick Premium Grade Plywood Side Panel
- Undermount Full Extension Soft Close Drawer Glides
- 3/4" Thick, 18" Deep Shelf With Metal Shelf Pin
- UV Coated Natural Plywood Interior Bottom
- 5/8" Plywood with Coated Matching Exterior Toe Kick
- 3/4" Dovetail Drawer Box With Insert Stoppers
- 6-Way Adjustable Hinge With Soft Close Feature
- 3/4" x 1-1/2" Hardwood Face Frame







BW.

BEVEL WHITE

■ AVAILABLE COLOR

BLUE
GREEN
WHITE

■ MATCHING STYLE

BW + BB
BW + BG



BW BEVEL

DESCRIPTION BEVEL White style is a classic and timeless choice for kitchen and bathroom cabinetry. It's characterized by its clean and bright appearance, making it a popular option for a wide range of interior design themes. BEVEL White exude classic elegance that stands the test of time. They can suit both contemporary and traditional design schemes, offering a timeless quality that doesn't go out of style.

SPECIFICATIONS

- 3/4" Thick Back Panel With Pre-drill Pocket
- 5/8" Thick Premium Grade Plywood Side Panel
- Undermount Full Extension Soft Close Drawer Glides
- 3/4" Thick, 18" Deep Shelf With Metal Shelf Pin
- UV Coated Natural Plywood Interior Bottom
- 5/8" Plywood with Coated Matching Exterior Toe Kick
- 3/4" Dovetail Drawer Box With Insert Stoppers
- 6-Way Adjustable Hinge With Soft Close Feature
- 3/4" x 1-1/2" Hardwood Face Frame

SLG

SHAKER LIGHT GREY

■ **AVAILABLE COLOR**

BLUE
GREEN
WHITE

■ **MATCHING STYLE**

SW + SLG



* Pictures are for illustrative purposes only.



SLG SHA

LIGHT GREY

industrial look without feeling too dark. This style offers an impressive minimalist masterpiece with enduring appeal.

SPECIFICATIONS

- 3/4" Thick Back Panel With Pre-drill Pocket
- 5/8" Thick Premium Grade Plywood Side Panel
- Undermount Full Extension Soft Close Drawer Glides
- 3/4" Thick, 18" Deep Shelf With Metal Shelf Pin
- UV Coated Natural Plywood Interior Bottom
- 5/8" Plywood with Coated Matching Exterior Toe Kick
- 3/4" Dovetail Drawer Box With Insert Stoppers
- 6-Way Adjustable Hinge With Soft Close Feature
- 3/4" x 1-1/2" Hardwood Face Frame



SW.
SHAKER WHITE

■ AVAILABLE COLOR

BLUE
GREEN
WHITE

■ MATCHING STYLE

SW + SD
SW + SN
SW + SLG







* Pictures are for illustrative purposes only.

SW SHAKER WH IT.E

DESCRIPTION The SHAKER White style, a classic and timeless design, embodies simplicity, functionality, and elegance. This style of cabinetry is a popular choice for kitchens and other spaces, known for its clean lines, versatility, and ability to complement a variety of design aesthetics.

SPECIFICATIONS

- 3/4" Thick Back Panel With Pre-drill Pocket
- 5/8" Thick Premium Grade Plywood Side Panel
- Undermount Full Extension Soft Close Drawer Glides
- 3/4" Thick, 18" Deep Shelf With Metal Shelf Pin
- UV Coated Natural Plywood Interior Bottom
- 5/8" Plywood with Coated Matching Exterior Toe Kick
- 3/4" Dovetail Drawer Box With Insert Stoppers
- 6-Way Adjustable Hinge With Soft Close Feature
- 3/4" x 1-1/2" Hardwood Face Frame



SN.

SHAKER NATURE

■ AVAILABLE COLOR

WHITE
LIGHT GREY
DRIFTWOOD
NATURE

■ MATCHING STYLE

SN + SD
SN + SW





SN SHAK

DESCRIPTION The SHAKER Natural style has a timeless and enduring quality.

The inherent warmth and authenticity of the natural wood create a design that can transcend changing trends and remain a classic choice for homeowners seeking lasting elegance.

SPECIFICATIONS

- 3/4" Thick Back Panel With Pre-drill Pocket
- 5/8" Thick Premium Grade Plywood Side Panel
- Undermount Full Extension Soft Close Drawer Glides
- 3/4" Thick, 18" Deep Shelf With Metal Shelf Pin
- UV Coated Natural Plywood Interior Bottom
- 5/8" Plywood with Coated Matching Exterior Toe Kick
- 3/4" Dovetail Drawer Box With Insert Stoppers
- 6-Way Adjustable Hinge With Soft Close Feature
- 3/4" x 1-1/2" Hardwood Face Frame



SD.

SHAKER DRIFTWOOD

■ AVAILABLE COLOR

WHITE
LIGHT GREY
NATURE
DRIFTWOOD

■ MATCHING STYLE

SD + SN
SD + SW



SDRIFTWOOD

DESCRIPTION This solid wood cabinet features a series of clean, straight lines and a natural finish of

living and rustic elegance, drawing inspiration from weathered wood and the natural beauty of driftwood. This unique cabinet style adds a touch of organic charm to any space, blending coastal aesthetics with a sense of well-worn, relaxed sophistication.

SPECIFICATIONS

- 3/4" Thick Back Panel With Pre-drill Pocket
- 5/8" Thick Premium Grade Plywood Side Panel
- Undermount Full Extension Soft Close Drawer Glides
- 3/4" Thick, 18" Deep Shelf With Metal Shelf Pin
- UV Coated Natural Plywood Interior Bottom
- 5/8" Plywood with Coated Matching Exterior Toe Kick
- 3/4" Dovetail Drawer Box With Insert Stoppers
- 6-Way Adjustable Hinge With Soft Close Feature
- 3/4" x 1-1/2" Hardwood Face Frame





* Pictures are for illustrative purposes only.

CTPCO.

DESCRIPTION Elevate your kitchen with our UV-finished Butcher Block Kitchen Countertop, a stunning fusion of style and functionality. Crafted from premium birchwood, each countertop is meticulously finished with a UV coating, enhancing its natural beauty while providing exceptional durability. The UV finish not only adds a glossy sheen but also protects the wood from scratches, stains, and moisture, ensuring your countertop retains its charm for years to come.

SPECIFICATIONS

- 1-1/2 and 1-3/4 thickness premium birch wood
- UV coating for enhanced durability and protection
- 4 sizes to fit your kitchen dimensions
- Straight edge with Rounded 3mm profile
- Easy to clean with mild soap and water; reapply food-safe finish
- Suitable for DIY installation or professional installation



BCTP. BIRCH WOOD COUNTERTOP

ITEM CODE	DIMENSION
BCTP9825-1 1/2	98Wx25Dx1-1/2H
BCTP7439-1 1/2	74Wx39Dx1-1/2H
BCTP7425-1 1/2	74Wx25Dx1-1/2H

ITEM CODE	DIMENSION
BCTP9636-1 3/4	96Wx36Dx1-3/4H
BCTP9630-1 3/4	96Wx30Dx1-3/4H
BCTP7236-1 3/4	72Wx36Dx1-3/4H
BCTP7230-1 3/4	72Wx30Dx1-3/4H
BCTP6036-1 3/4	60Wx36Dx1-3/4H
BCTP6030-1 3/4	60Wx30Dx1-3/4H
BCTP4830-1 3/4	48Wx30Dx1-3/4H

DKDISPL

F.A.B. BACKBOARD



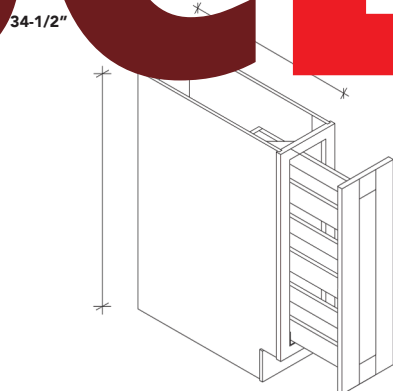


SC
SHOWCASE

■ ITEM CODE
SHOWCASE

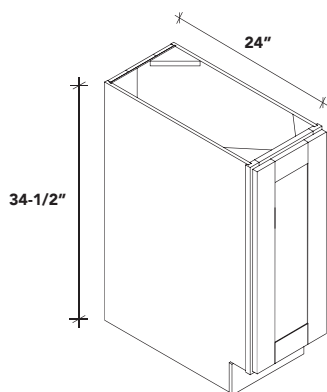
■ DIMENSION
36Wx86-1/2Hx24D

BCBASE



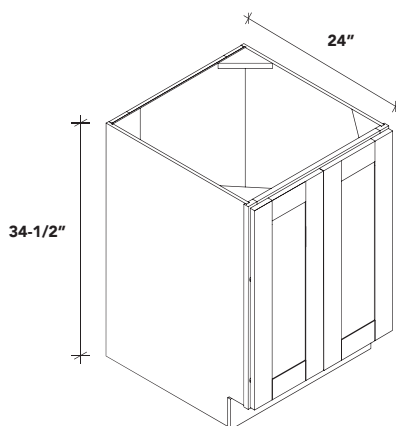
BE FULL DOOR BASE SPICE

ITEM CODE	DIMENSION
BF06-PO	6Wx34-1/2Hx24D
BF09-PO	9Wx34-1/2Hx24D



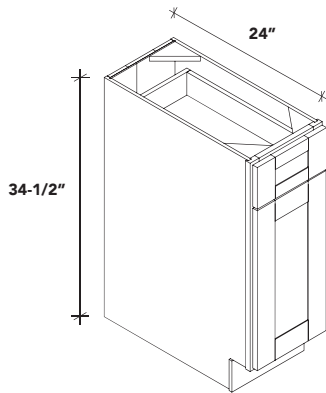
BE FULL DOOR BASE

ITEM CODE	DIMENSION
BF0924	9Wx34-1/2Hx24D
BF1224	12Wx34-1/2Hx24D
BF1524	15Wx34-1/2Hx24D
BF1824	18Wx34-1/2Hx24D
BF2124	21Wx34-1/2Hx24D



BE FULL DOOR BASE

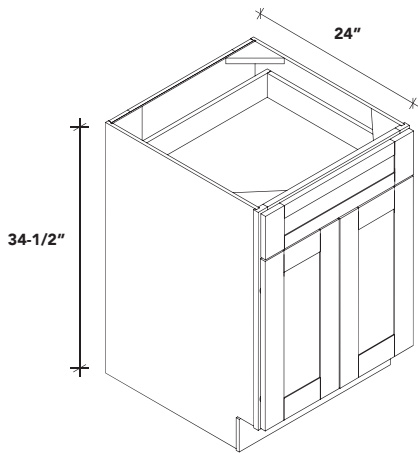
ITEM CODE	DIMENSION
BF2424	24Wx34-1/2Hx24D
BF2724	27Wx34-1/2Hx24D
BF302	30Wx34-1/2Hx24D
4	33Wx34-1/2Hx24D
BF3324	36Wx34-1/2Hx24D
BF3624	



B.

BASE SINGLE DOOR

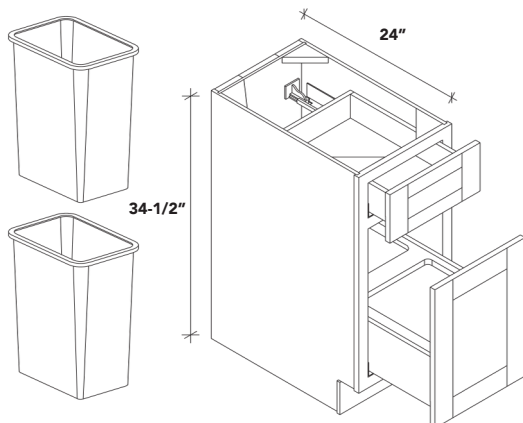
ITEM CODE	DIMENSION
B12	12Wx34-1/2Hx24D
B15	15Wx34-1/2Hx24D
B18	18Wx34-1/2Hx24D
B21	21Wx34-1/2Hx24D



B.

BASE DOUBLE DOORS

ITEM CODE	DIMENSION
B24	24Wx34-1/2Hx24D
B27	27Wx34-1/2Hx24D
B30	30Wx34-1/2Hx24D
B33	33Wx34-1/2Hx24D
B36	36Wx34-1/2Hx24D



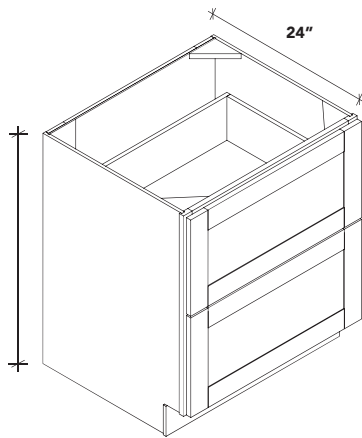
B18TR.

BASE WASTE BASKET

ITEM CODE	DIMENSION
B18TR	18Wx34-1/2Hx24D

* 2 waste bins included

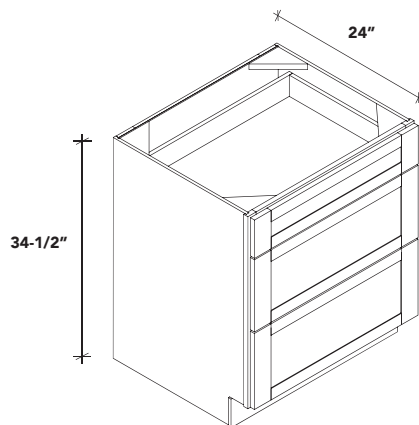
BCBA.SE



DB.-2

2 DRAWER BASE

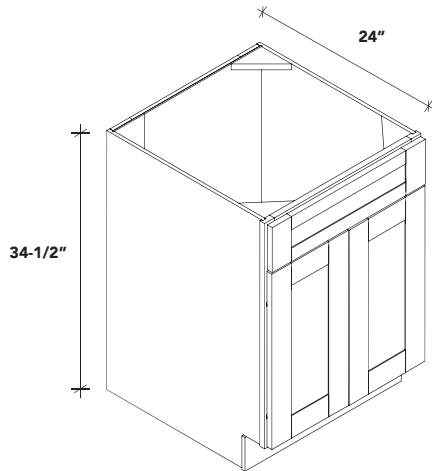
ITEM CODE	DIMENSION
DB24-2	24Wx34-1/2Hx24D
DB30-2	30Wx34-1/2Hx24D



DB.-3

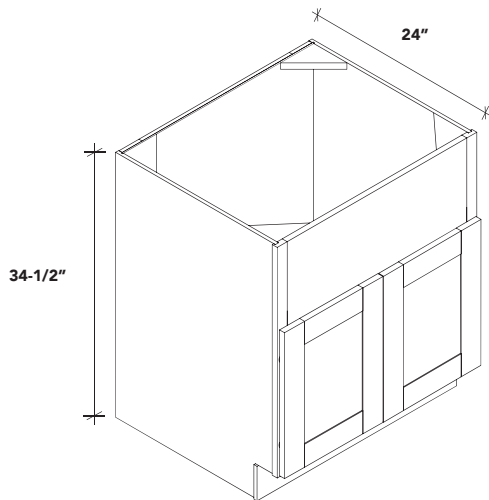
3 DRAWER BASE

ITEM CODE	DIMENSION
DB12	12Wx34-1/2Hx24D
DB15	15Wx34-1/2Hx24D
DB18	18Wx34-1/2Hx24D
DB21	21Wx34-1/2Hx24D
DB24	24Wx34-1/2Hx24D
DB27	27Wx34-1/2Hx24D
DB30	30Wx34-1/2Hx24D
DB33	33Wx34-1/2Hx24D
DB36	36Wx34-1/2Hx24D



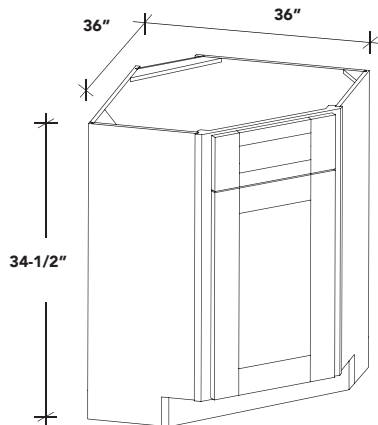
SB. SINK BASE

ITEM CODE	DIMENSION
SB24	24Wx34-1/2Hx24D
SB27	27Wx34-1/2Hx24D
SB30	30Wx34-1/2Hx24D
SB33	33Wx34-1/2Hx24D
SB36	36Wx34-1/2Hx24D



FS. FARMER SINK

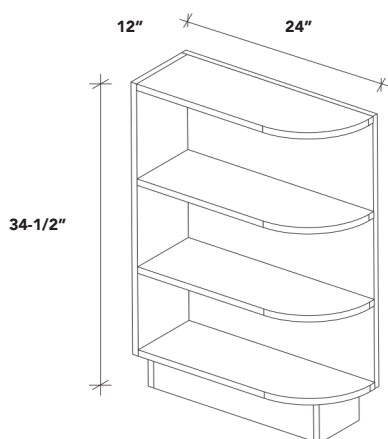
ITEM CODE	DIMENSION
FS33	33Wx34-1/2Hx24D
FS36	36Wx34-1/2Hx24D



DSB. DIAGONAL SINK BASE

ITEM CODE	DIMENSION
DSB36	36Wx34-1/2Hx24D

ECENCD

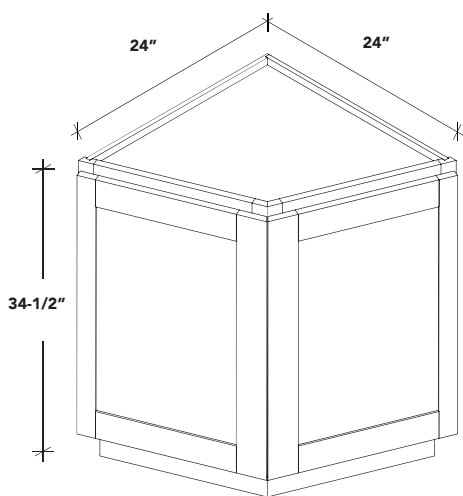


BES. OPEN SHELF END

▪ **ITEM CODE**
BES12

▪ **DIMENSION**
12Wx34-1/2Hx24D

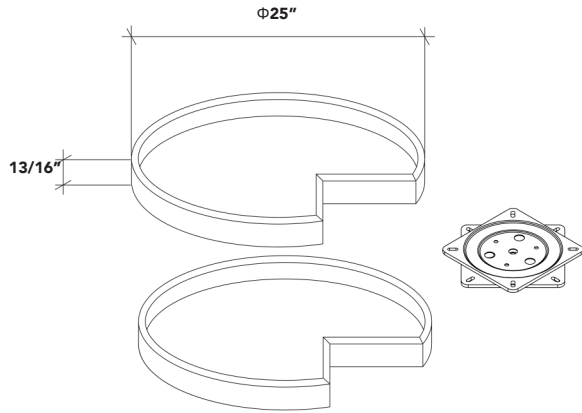
* Same item for left and right open shelf end



BEC. CORNER BASE

▪ **ITEM CODE**
BEC24

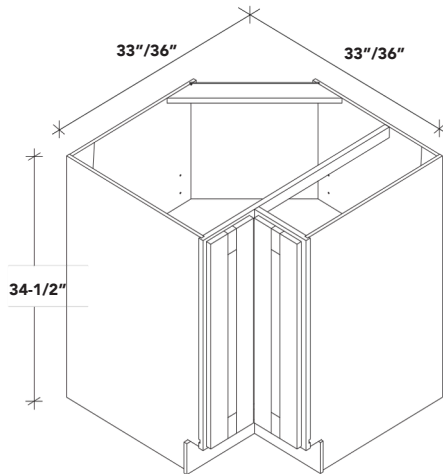
▪ **DIMENSION**
24Wx34-1/2Hx24D



LST. LAZY SUSAN TRAY

ITEM CODE	DIMENSION
LSTRAY33/36	25Wx13/16Hx25D

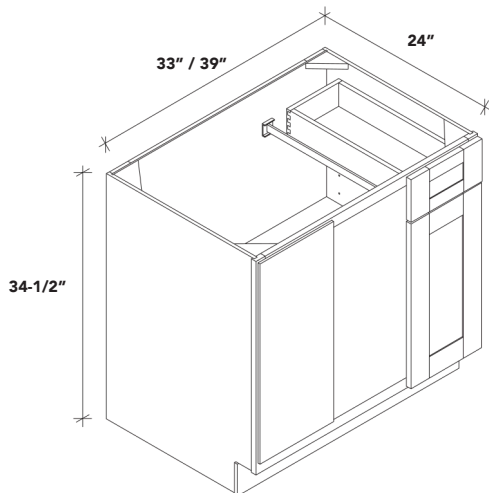
- * Install on shelf when assembly
- * Common product fits LSB33 & LSB36
- * 1 LST = 2 turn table



LSB. LAZY SUSAN

ITEM CODE	DIMENSION
LSB33	33Wx34-1/2Hx24D
LSB36	36Wx34-1/2Hx24D

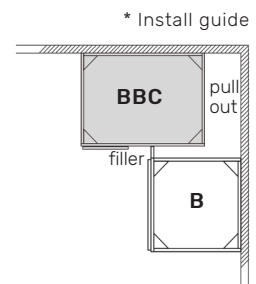
- * Standard shelf included
- * Lazy Susan Tray sold separately



BBC. BLIND BASE

ITEM CODE	DIMENSION
BBC39/42	33Wx34-1/2Hx24D
BBC42/45	39Wx34-1/2Hx24D

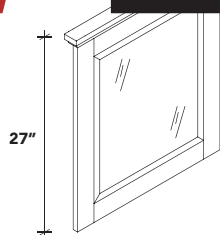
- * BBC39/42 actual width 33", pull out 6"-9" to install
- * BBC42/45 actual width 39", pull out 3"-6" to install
- * Same item code for left and right blind base *
- Adjacent filler sold separately**



BV BAT.F

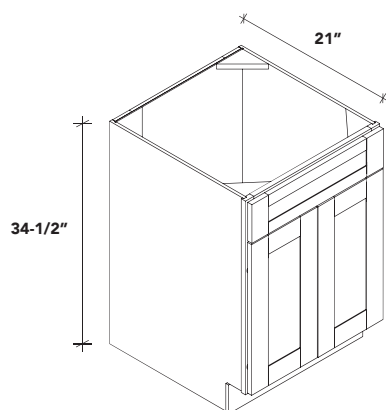


* Cross sectional view



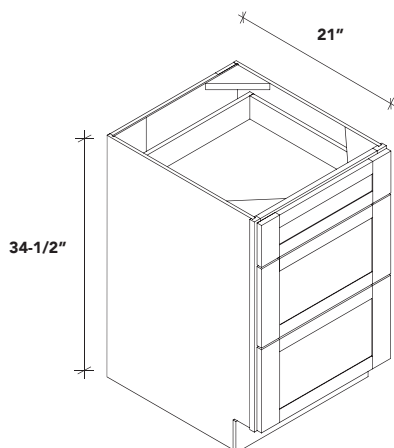
M. MIRROR DOOR

ITEM CODE	DIMENSION
M2427	24Wx27H
M3027	30Wx27H



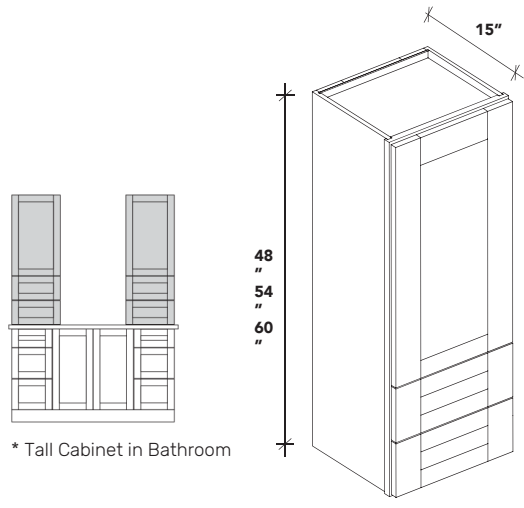
VSB. VANITY SINK BASE

ITEM CODE	DIMENSION
VSB2421	24Wx34-1/2Hx21D
VSB2721	27Wx34-1/2Hx21D
VSB3021	30Wx34-1/2Hx21D
VSB3621	36Wx34-1/2Hx21D



VDB. VANITY DRAWER BASE

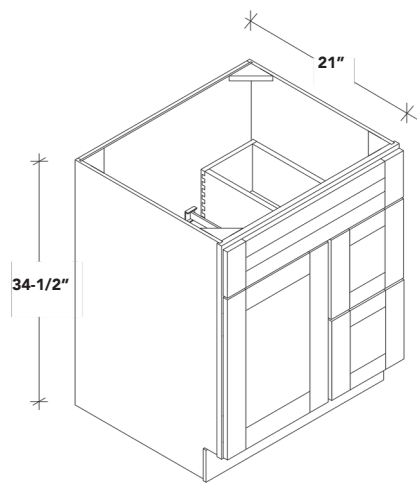
ITEM CODE	DIMENSION
VDB1221	12Wx34-1/2Hx21D
VDB1521	15Wx34-1/2Hx21D
VDB1821	18Wx34-1/2Hx21D



WD.

TALL CABINET

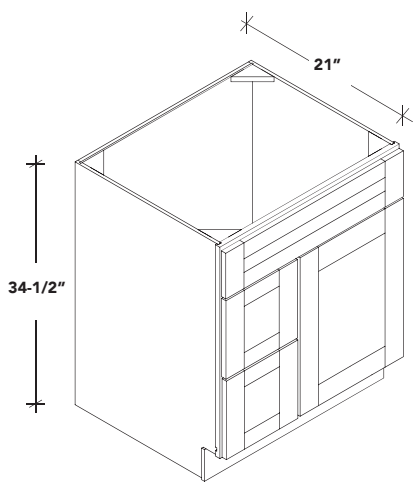
ITEM CODE	DIMENSION
WD1848	18Wx48Hx15D
WD1854	18Wx54Hx15D
WD1860	18Wx60Hx15D



VSD.30R

BATHROOM VANITY

ITEM CODE	DIMENSION
VSD3021R	30Wx34-1/2Hx21D

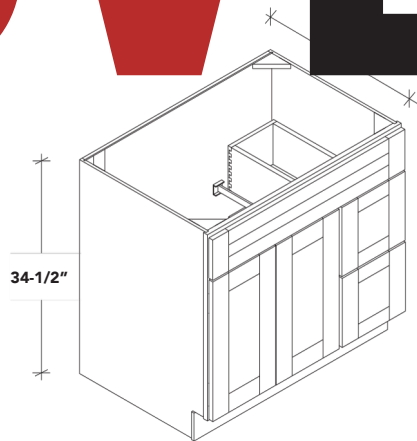


VSD.30L

BATHROOM VANITY

ITEM CODE	DIMENSION
VSD3021L	30Wx34-1/2Hx21D

BV BAT.F

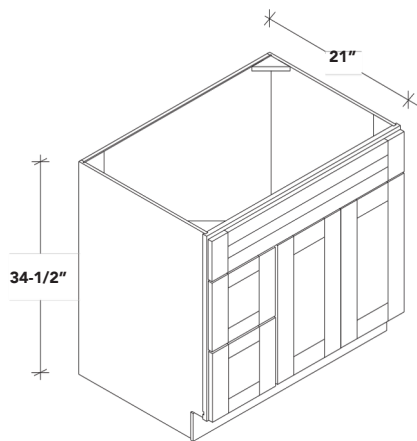


VSD.36R

BATHROOM VANITY

■ ITEM CODE
VSD3621R

■ DIMENSION
36Wx34-1/2Hx21D

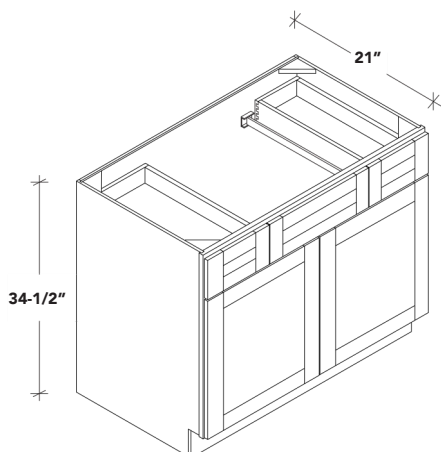


VSD.36L

BATHROOM VANITY

■ ITEM CODE
VSD3621L

■ DIMENSION
36Wx34-1/2Hx21D

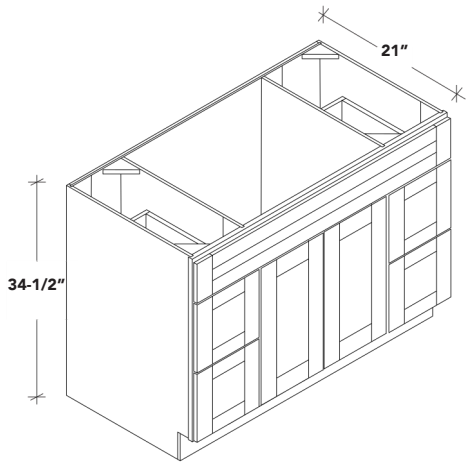


VSD.42

BATHROOM VANITY

■ ITEM CODE
VSD4221

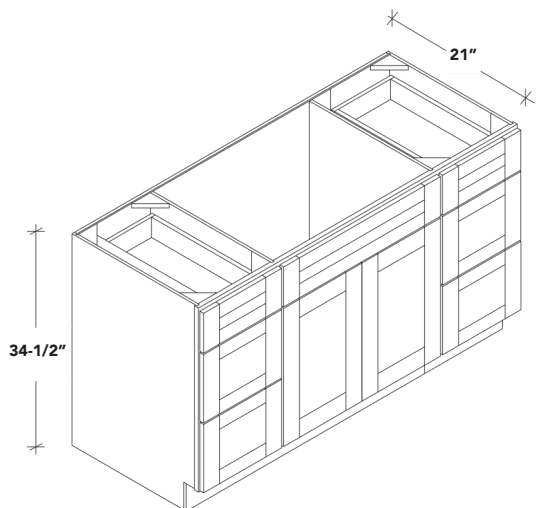
■ DIMENSION
42Wx34-1/2Hx21D



VSD.48

BATHROOM VANITY

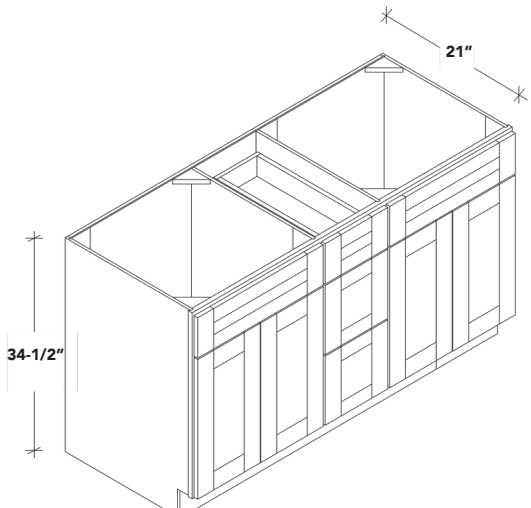
ITEM CODE	DIMENSION
VSD4821	48Wx34-1/2Hx21D



VSD.60S

BATHROOM VANITY SINGLE

ITEM CODE	DIMENSION
VSD6021SINGLE	60Wx34-1/2Hx21D



VSD.60D

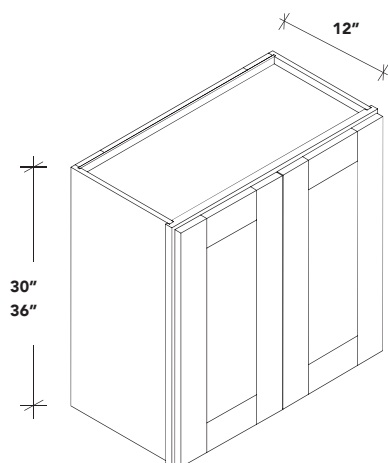
BATHROOM VANITY DOUBLE

ITEM CODE	DIMENSION
VSD6021DOUBLE	60Wx34-1/2Hx21D

W WALL

W.30-36H

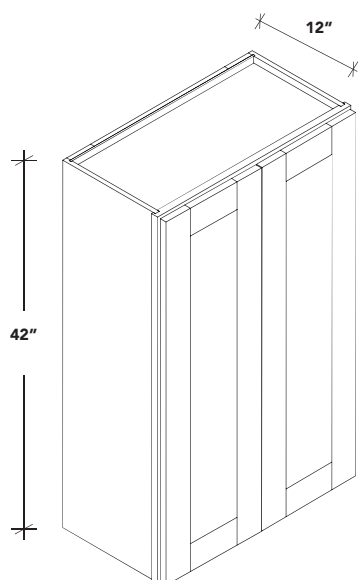
2 DOORS WALL CABINET



ITEM CODE	DIMENSION
W2430	24Wx30Hx12D
W2730	27Wx30Hx12D
W303	30Wx30Hx12D
0	33Wx30Hx12D
W3330	36Wx30Hx12D
W3630	

ITEM CODE	DIMENSION
W243	24Wx36Hx12D
6	27Wx36Hx12D
W2736	30Wx36Hx12D
W303	33Wx36Hx12D
6	36Wx36Hx12D

W3336
 *30" and 36" height wall cabinet with 2 shelves
 W363
 6



W.42H

2 DOORS WALL CABINET

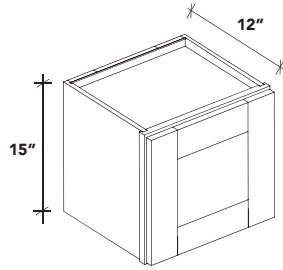
ITEM CODE	DIMENSION
W244	24Wx42Hx12D
2	27Wx42Hx12D
W2742	30Wx42Hx12D
W304	33Wx42Hx12D
2	36Wx42Hx12D

W334
 *42" height wall cabinet with 3 shelves
 W364
 2



W.15H

1 DOOR WALL CABINET



ITEM CODE DIMENSION

W121 12Wx15Hx12D

5 15Wx15Hx12D

W151 18Wx15Hx12D

5 21Wx15Hx12D

W181

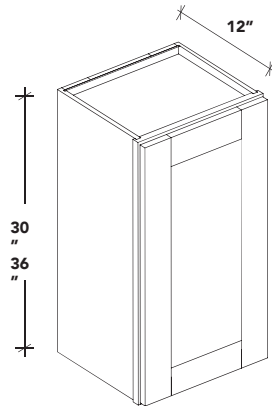
5

W211

5

W.30-36H

1 DOOR WALL CABINET



ITEM CODE

DIMENSION

W0930 9Wx30Hx12D

W1230 12Wx30Hx12

W1530 D

W1830 15Wx30Hx12

W2130 D

18Wx30Hx12

ITEM CODE

DIMENSION

W0936 9Wx36Hx12

W1236 12Wx36Hx12

W1536 D

W1836 15Wx36Hx12

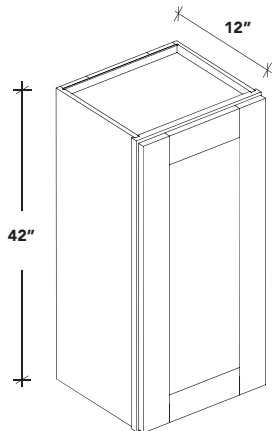
W2136 D

18Wx36Hx12

* 30" and 36" height wall cabinet with 2 shelves

21Wx36Hx12

D



W.42H

1 DOOR WALL CABINET

ITEM CODE DIMENSION

W0942 9Wx42Hx12D

W1242 12Wx42Hx12

W1542 D

W1842 15Wx42Hx12

W2142 D

18Wx42Hx12

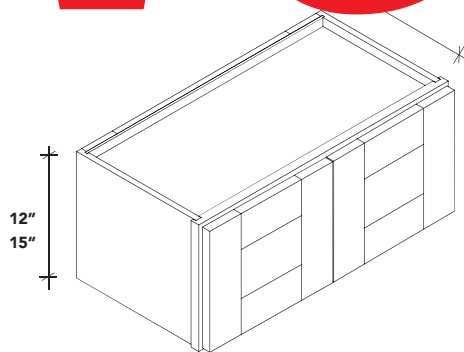
* 42" height wall cabinet with 3 shelves

21Wx42Hx12

D

WALL CABINET

WC WALL



W.25H 2 DOORS WALL CABINET

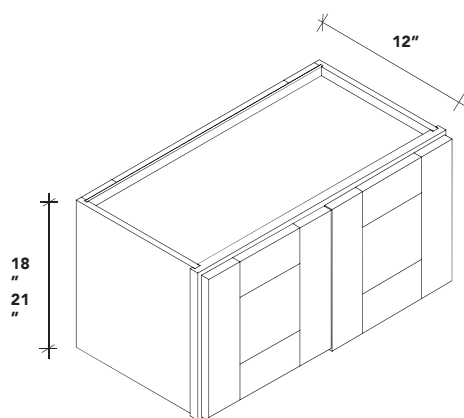
ITEM CODE DIMENSION

W3012	30Wx12Hx12D
W3312	33Wx12Hx12D
W3612	36Wx12Hx12D



ITEM CODE DIMENSION

W2415	24Wx15Hx12D
W2715	27Wx15Hx12D
W3015	30Wx15Hx12D
W3315	33Wx15Hx12D
W3615	36Wx15Hx12D



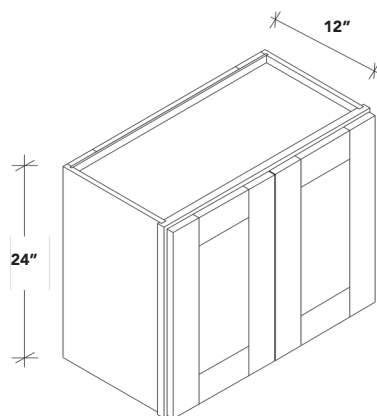
W.18-21H 2 DOORS WALL CABINET

ITEM CODE DIMENSION

W3018	30Wx18Hx12D
W3318	33Wx18Hx12D
W3618	36Wx18Hx12D

ITEM CODE DIMENSION

W3021	30Wx21Hx12D
W3321	33Wx21Hx12D
W3621	36Wx21Hx12D



W.24H 2 DOORS WALL CABINET

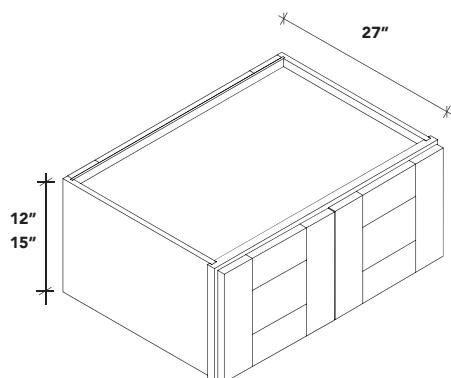
ITEM CODE DIMENSION

W3024	30Wx24Hx12D
W3324	33Wx24Hx12D
W3624	36Wx24Hx12D

* 24" height wall cabinet with 1 shelf

FCFRID

FRIDGE CABINET

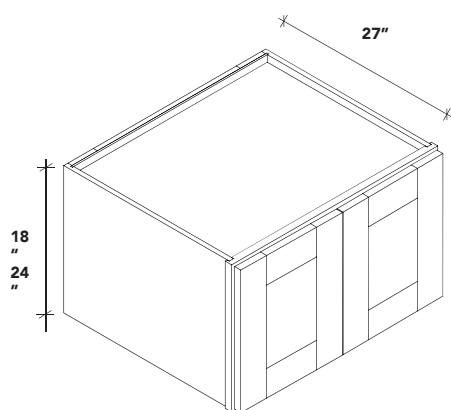


W.12-15H

2 DOORS WALL CABINET

ITEM CODE	DIMENSION
W301227	30Wx12Hx27D
W331227	33Wx12Hx27D
W361227	36Wx12Hx27D

ITEM CODE	DIMENSION
W301527	30Wx15Hx27D
W331527	33Wx15Hx27D
W361527	36Wx15Hx27D



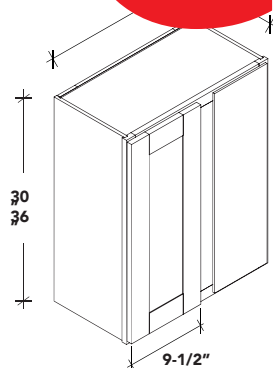
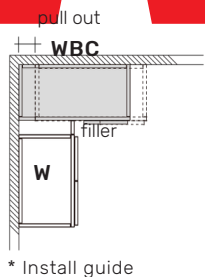
W.18/24H

2 DOORS WALL CABINET

ITEM CODE	DIMENSION
W301827	30Wx18Hx27D
W331827	33Wx18Hx27D
W361827	36Wx18Hx27D

ITEM CODE	DIMENSION
W302427	30Wx24Hx27D
W332427	33Wx24Hx27D
W362427	36Wx24Hx27D

WCV



WBC.30-36H

BLIND CORNER CABINET

ITEM CODE

WBC2430

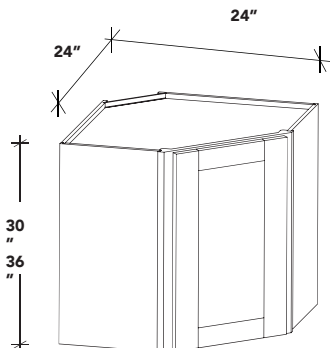
WBC2436

DIMENSION

24Wx30Hx12D

24Wx36Hx12D

- * 30" and 36" height wall cabinet with 2 shelves
- * Adjacent filler sold separately
- * Pull out 0"-3" to install



WDC.30-36H

WALL DIAGONAL CORNER CABINET

ITEM CODE

WDC2430

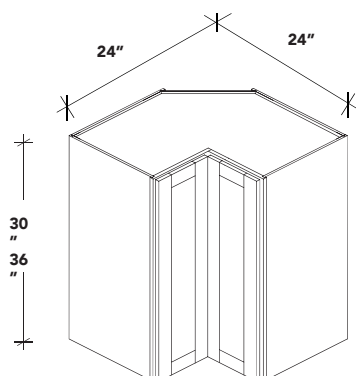
WDC2436

DIMENSION

24Wx30Hx12D

24Wx36Hx12D

- * 30" and 36" height wall cabinet with 2 shelves



WPC.30-36H

PIE CUT CORNER CABINET

ITEM CODE

WPC2430

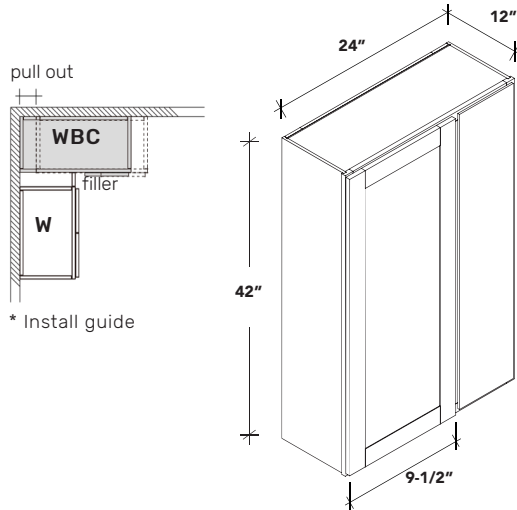
WPC2436

DIMENSION

24Wx30Hx12D

24Wx36Hx12D

- * 30" and 36" height wall cabinet with 2 shelves

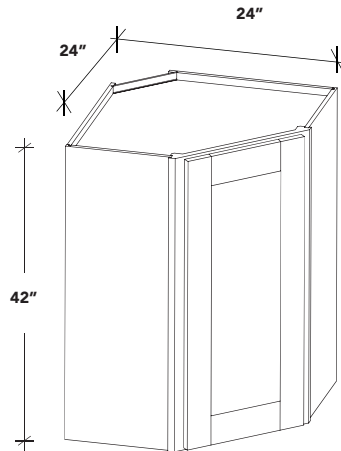


WBC.42H

BLIND CORNER CABINET

ITEM CODE	DIMENSION
WBC2442	24Wx42Hx12D

- * 42" height wall cabinet with 3 shelves
- * Adjacent filler sold separately
- * Pull out 0"-3" to install

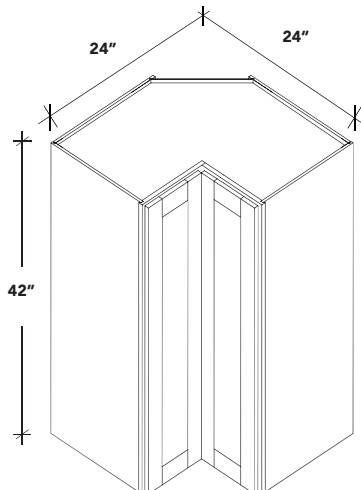


WDC.42H

WALL DIAGONAL CORNER CABINET

ITEM CODE	DIMENSION
WDC2442	24Wx42Hx12D

- * 42" height wall cabinet with 3 shelves



WPC.42H

PIE CUT CORNER CABINET

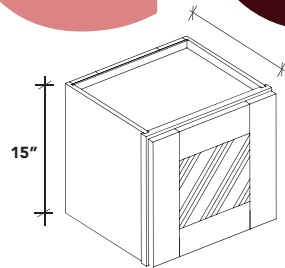
ITEM CODE	DIMENSION
WPC2442	24Wx42Hx12D

- * 42" height wall cabinet with 3 shelves

GCGGLA.S

* CLEAR GLASS DOOR
* PAINTED INTERIOR FINISH
AS EXTERIOR COLOUR

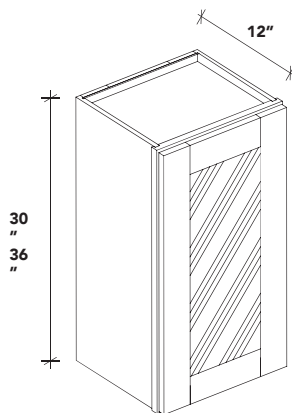
PAINTED INSIDE GLASS DOOR WALL CABINET



ITEM CODE	DIMENSION
PGDW1215	12Wx15Hx12D
PGDW1515	15Wx15Hx12D
PGDW181	18Wx15Hx12D
5	21Wx15Hx12D
PGDW2115	

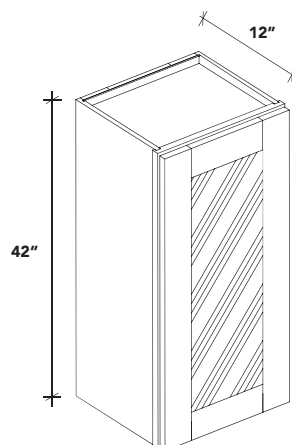
PGDW.

PAINTED INSIDE GLASS DOOR WALL CABINET



ITEM CODE	DIMENSION
PGDW1530	15Wx30Hx12D
PGDW183	18Wx30Hx12D
0	21Wx30Hx12D
PGDW2130	
ITEM CODE	DIMENSION
PGDW1536	15Wx36Hx12D
PGDW183	18Wx36Hx12D
6	21Wx36Hx12D

PGDW2136
* 30" and 36" height wall cabinet with 2 shelves

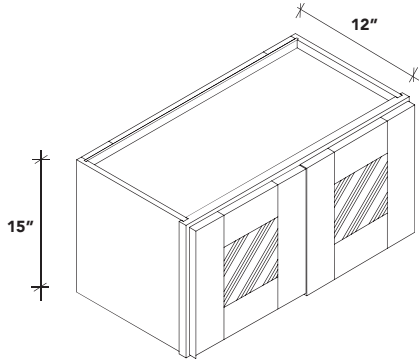


PGDW.

PAINTED INSIDE GLASS DOOR WALL CABINET

ITEM CODE	DIMENSION
PGDW1542	15Wx42Hx12D
PGDW184	18Wx42Hx12D
2	21Wx42Hx12D

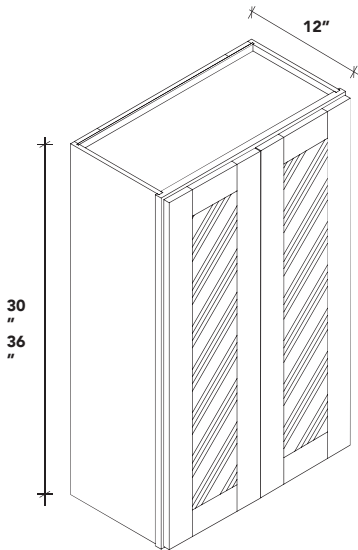
PGDW2142
* 42" height wall cabinet with 3 shelves



PGDW.

PAINTED INSIDE GLASS DOORS WALL CABINET

ITEM CODE	DIMENSION
PGDW2415	24Wx15Hx12D
PGDW2715	27Wx15Hx12D
PGDW3015	30Wx15Hx12D
PGDW3315	33Wx15Hx12D
PGDW3615	36Wx15Hx12D



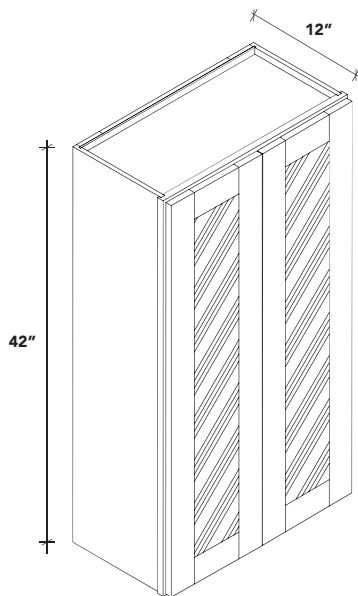
PGDW.

PAINTED INSIDE GLASS DOORS WALL CABINET

ITEM CODE	DIMENSION
PGDW2430	24Wx30Hx12D
PGDW2730	27Wx30Hx12D
PGDW3030	30Wx30Hx12D
PGDW3330	33Wx30Hx12D
PGDW3630	36Wx30Hx12D

ITEM CODE	DIMENSION
PGDW2436	24Wx36Hx12D
PGDW2736	27Wx36Hx12D
PGDW3036	30Wx36Hx12D
PGDW3336	33Wx36Hx12D
PGDW3636	36Wx36Hx12D

* 30" and 36" height wall cabinet with 2 shelves



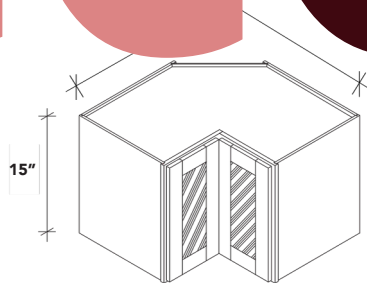
PGDW.

PAINTED INSIDE GLASS DOORS WALL CABINET

ITEM CODE	DIMENSION
PGDW2442	24Wx42Hx12D
PGDW2742	27Wx42Hx12D
PGDW3042	30Wx42Hx12D
PGDW3342	33Wx42Hx12D
PGDW3642	36Wx42Hx12D

* 42" height wall cabinet with 3 shelves

GCC GLASS



PGDWPC.

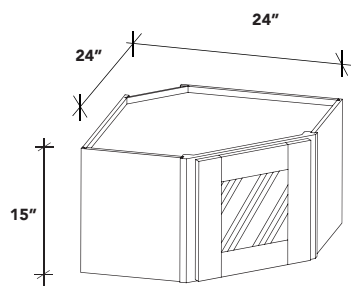
PAINTED GLASS DOOR PIE CUT CORNER CABINET

■ ITEM CODE

WPC2415

■ DIMENSION

24Wx15Hx12D



PGDWDC.

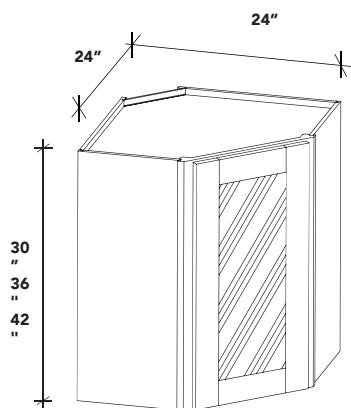
PAINTED GLASS DOOR WALL DIAGONAL CORNER CABINET

■ ITEM CODE

PGDWDC2415

■ DIMENSION

24Wx15Hx24D



PGDWDC.

PAINTED GLASS DOOR WALL DIAGONAL CORNER CABINET

■ ITEM CODE

PGDWDC2430

PGDWDC2436

PGDWDC2442

■ DIMENSION

24Wx30Hx24D

24Wx36Hx24D

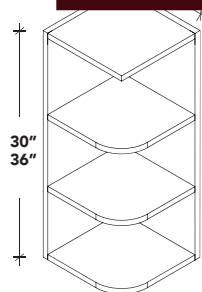
24Wx42Hx24D

* 30" and 36" height wall cabinet with 2 shelves

* 42" height wall cabinet with 3 shelves

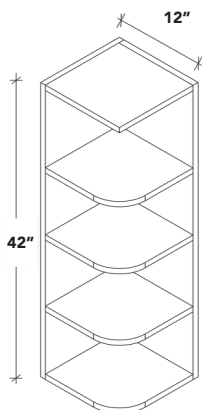
WECWA

WALL END CABINET



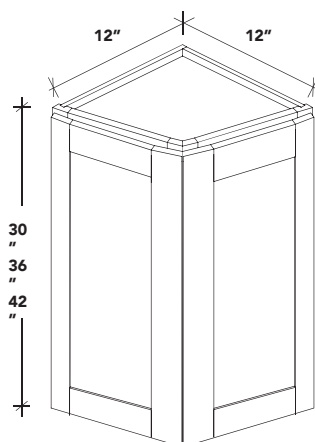
OE.
OPEN END CABINET

ITEM CODE	DIMENSION
OE1230	12Wx30Hx12D
OE1236	12Wx36Hx12D



OE.
OPEN END CABINET

ITEM CODE	DIMENSION
OE1242	12Wx42Hx12D

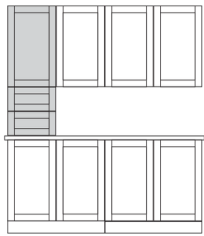


WAE.
WALL ANGLE END CABINET

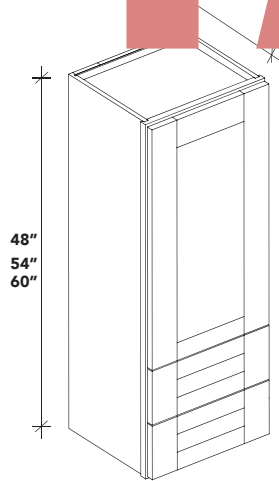
ITEM CODE	DIMENSION
WAE1230	12Wx30Hx12D
WAE1236	12Wx36Hx12D
WAE1242	12Wx42Hx12D

* 30" and 36" height wall cabinet with 2 shelves
* 42" height wall cabinet with 3 shelves

TP TALL

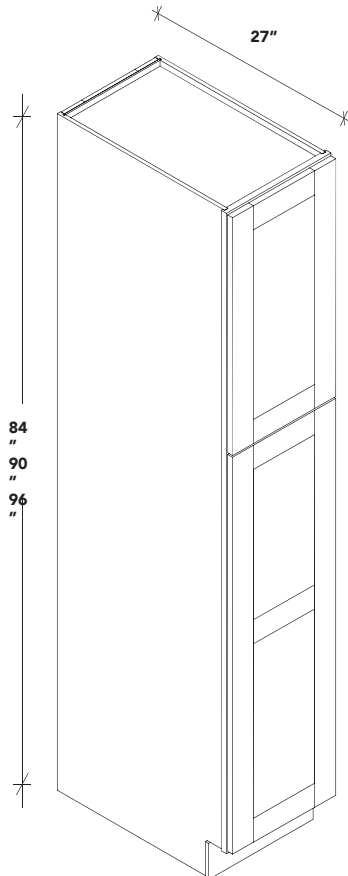


* Tall Cabinet in Kitchen



WD. TALL CABINET

ITEM CODE	DIMENSION
WD1848	18Wx48Hx15D
WD1854	18Wx54Hx15D
WD1860	18Wx60Hx15D

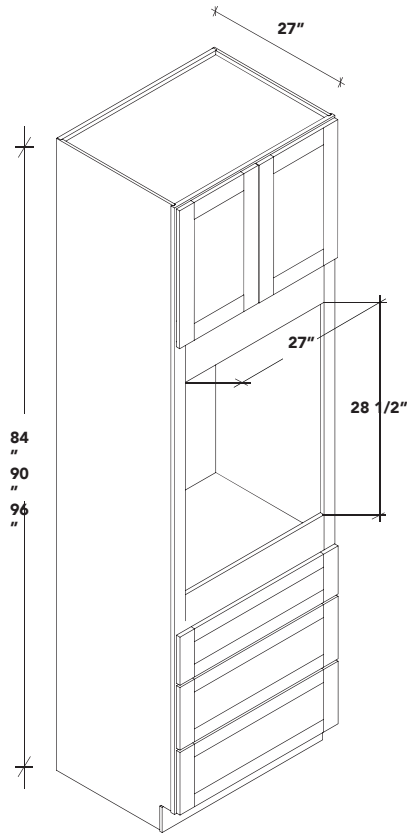


TP. 2 DOORS PANTRY CABINET

ITEM CODE	DIMENSION
TP188427	18Wx84Hx27D
TP189027	18Wx90Hx27D
TP189627	18Wx96Hx27D

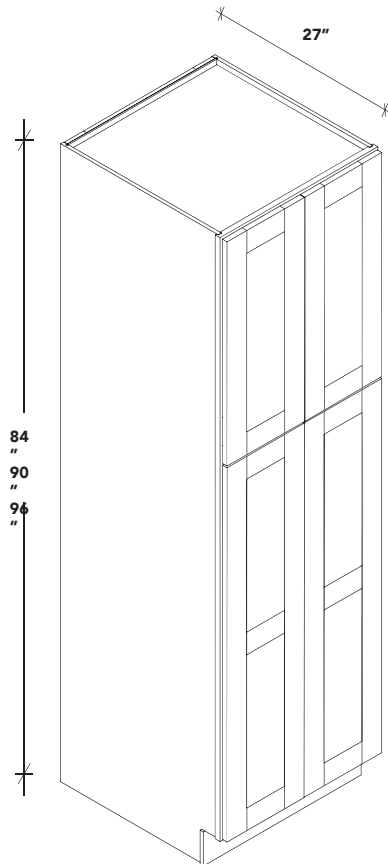
* Pantry RD sold separately
 * 84" and 90" height pantry with 5 shelves
 * 96" height pantry with 6 shelves

TALL PANTRY CABINET



OC OVEN CABINET

ITEM CODE	DIMENSION
OC338427	33Wx84Hx27D
OC339027	33Wx90Hx27D
OC339627	33Wx96Hx27D



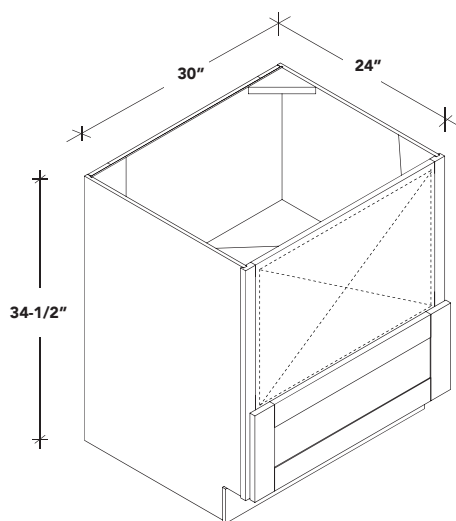
TP 4 DOORS PANTRY CABINET

ITEM CODE	DIMENSION
TP248427	24Wx84Hx27D
TP249027	24Wx90Hx27D
TP249627	24Wx96Hx27D

ITEM CODE	DIMENSION
TP308427	30Wx84Hx27D
TP309027	30Wx90Hx27D
TP309627	30Wx96Hx27D

- * Pantry RD sold separately
- * 84" and 90" height pantry with 5 shelves
- * 96" height pantry with 6 shelves

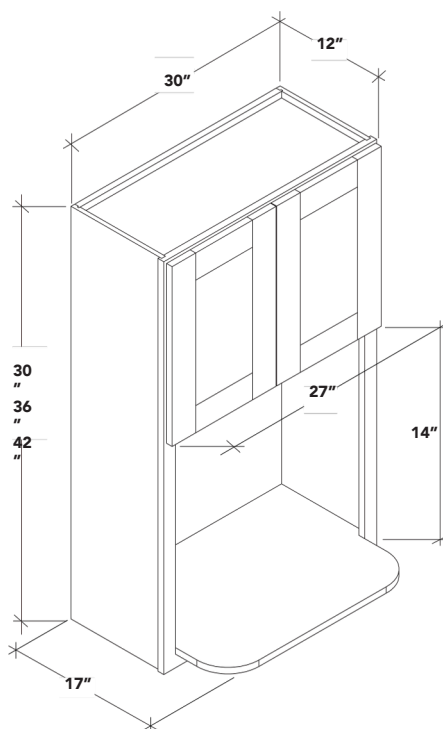
MCMICR



BMC. BUILD-IN MICROWAVE BASE

■ ITEM CODE	■ DIMENSION
BMC30	30Wx34-1/2Hx24D

* For build-in microwave with cover panel
 * Maximum cut out size: 27"Wx18"H



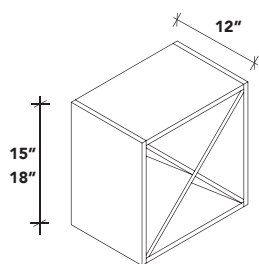
WM. WALL MICROWAVE CABINET

■ ITEM CODE	■ DIMENSION
WM3030	30Wx30Hx12D
WM3036	30Wx36Hx12D
WM3042	30Wx42Hx12D

* Interior painted

SA.

SPECIALTY ACCESSORY

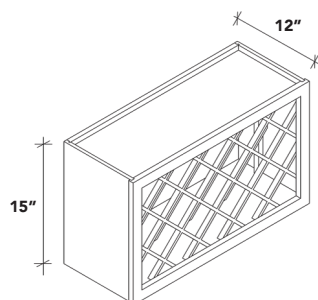


WR.

WINE RACK

ITEM CODE	DIMENSION
WR1515	15Wx15Hx12D
WR181	18Wx18Hx12D

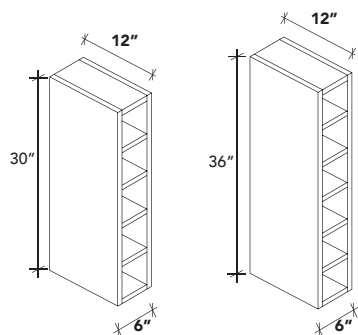
8



WR.

WINE RACK

ITEM CODE	DIMENSION
WR3015	30Wx15Hx12D

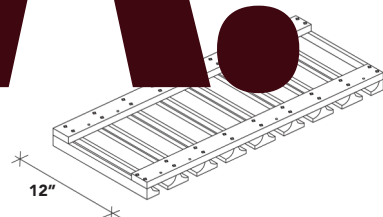


WC.

WINE CUBE

ITEM CODE	DIMENSION
WC0630	6Wx30Hx12D
WC0636	6Wx36Hx12D

SA. SPECIALTY ACCESSORY



GL. GLASS HOLD

ITEM CODE	DIMENSION
GL-30	30Wx12D
GL-36	36Wx12D

RD. ROLL-OUT TRAY

ROLL-OUT TRAY

ITEM CODE	DIMENSION
RD15	15Wx4Hx21D
RD18	18Wx4Hx21D
RD21	21Wx4Hx21D
RD24	24Wx4Hx21
RD27	D
RD30	27Wx4Hx21D
RD33	30Wx4Hx21
RD36	D
	33Wx4Hx21

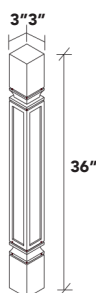
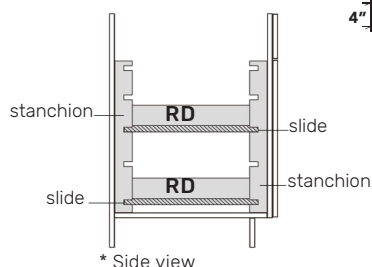
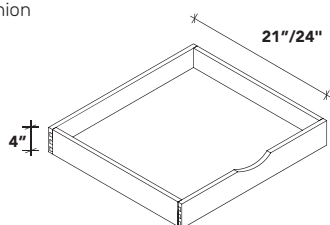
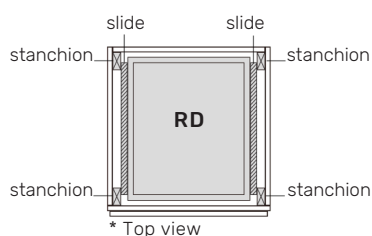
ITEM CODE	DIMENSION
RD18 TP	38Wx4Hx24D
RD24 TP	24Wx4Hx24
RD30 TP	D
	30Wx4Hx24

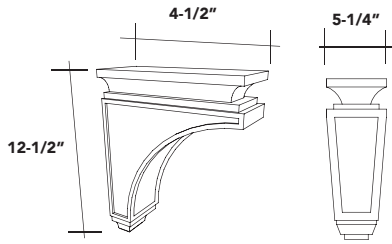


* Includes 2 slides and 4 stanchions
 * Stanchions install on the inside corners of cabinet
 * 21D for Base Cabinet, 24D for Pantry

SP. POST

ITEM CODE	DIMENSION
SP336	3Wx36Hx3D

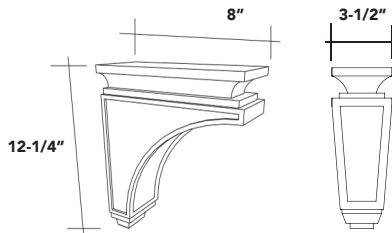




CMCB.

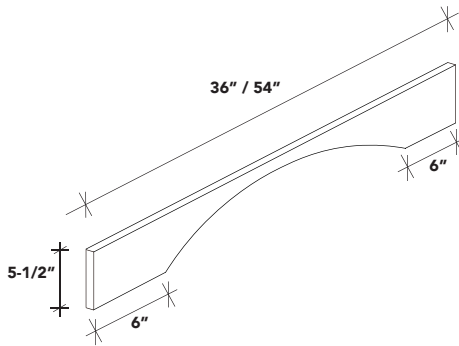
CORBEL

ITEM CODE	DIMENSION
CMCB	51/4Wx121/2Hx41/2D



CML.

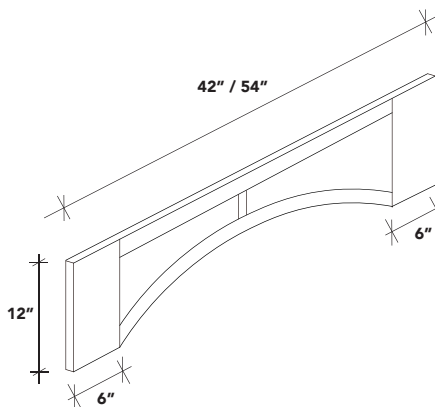
ITEM CODE	DIMENSION
CML	31/2Wx121/4Hx8D



VAR.

ITEM CODE	DIMENSION
VAR36	36Wx5-1/2Hx3/4D
VAR54	54Wx5-1/2Hx3/4D

* Can be cut up to 3" on both sides



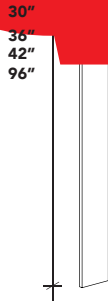
VARP.

VALANCE

ITEM CODE	DIMENSION
VARP42	42Wx12Hx3/4D
VARP54	54Wx12Hx3/4D

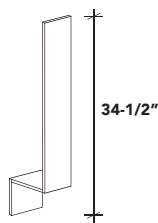
* Can be cut up to 3" on both sides

SAFETY



ITEM CODE	DIMENSION
WF30	3Wx30Hx3/4D
WF36	3Wx36Hx3/4D
WF342	3Wx42Hx3/4D
WF396	3Wx96Hx3/4D

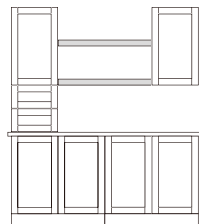
ITEM CODE	DIMENSION
WF630	6Wx30Hx3/4D
WF636	6Wx36Hx3/4D
WF642	6Wx42Hx3/4D
WF696	6Wx96Hx3/4D



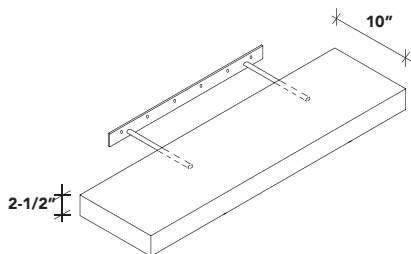
BF.

BASE FILLER

ITEM CODE	DIMENSION
BF	3Wx34-1/2H
3	6Wx34-1/2H
BF	
6	



* Floating Shelf in Kitchen



FLS.

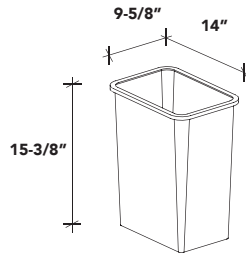
FLOATING SHELF

ITEM CODE	DIMENSION
FLS24	24Wx10Hx2-1/2D
FLS30	30Wx10Hx2-1/2D
FLS36	36Wx10Hx2-1/2D
FLS42	42Wx10Hx2-1/2D



TUK.

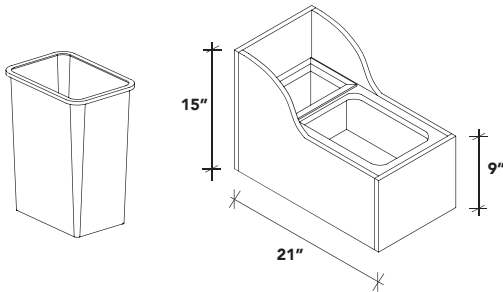
TOUCH UP KIT



TR.

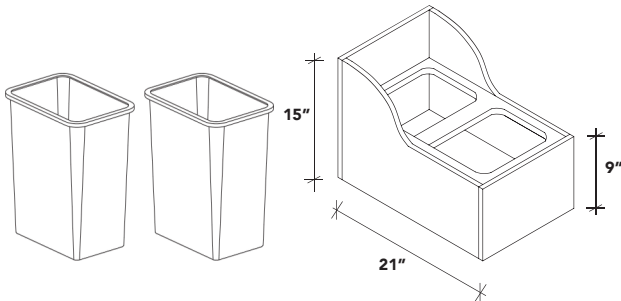
TRASH BIN

ITEM CODE	DIMENSION
TR BIN	14Wx15-3/8Hx9-5/8D



TC.

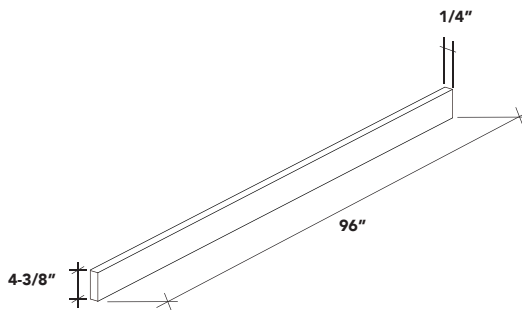
TRASH BIN CABINET	ITEM CODE	DIMENSION
TC15		15Wx15Hx21D
* Includes one waste bin		



TC.

TRASH BIN CABINET	ITEM CODE	DIMENSION
TC18		18Wx15Hx21D
TC21		21Wx15Hx21D

* Includes two waste bins



TK.

TOE KICK

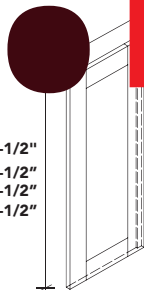
ITEM CODE	DIMENSION
TK8	96-1/84-3/8Hx1/4D



TOA.

PL. PANE

14-1/2"
29-1/2"
35-1/2"
41-1/2"



ITEM CODE

WP-W15

WP-W30

WP-W36

WP-W42

DIMENSION

11-1/2Wx14-1/2Hx3/4D

11-1/2Wx29-1/2Hx3/4D

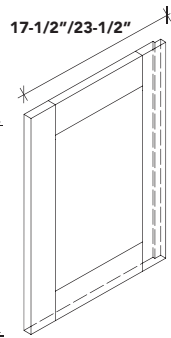
11-1/2Wx35-1/2Hx3/4D

11-1/2Wx41-1/2Hx3/4D

WP.

WALL PANEL-BASE

29-1/2"



17-1/2"/23-1/2"

ITEM CODE

WP-BASE18

WP-BASE24

DIMENSION

17-1/2Wx29-1/2Hx3/4D

23-1/2Wx29-1/2Hx3/4D

79"
85"
91"



26-1/2"



WP.

WALL PANEL-T



ITEM CODE

WP-T84

WP-T90

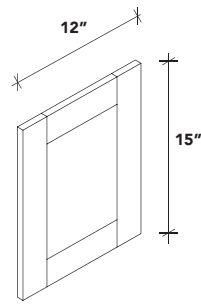
WP-T96

DIMENSION

26-1/2Wx79Hx3/4D

26-1/2Wx85Hx3/4D

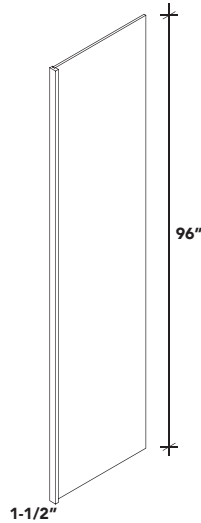
26-1/2Wx91Hx3/4D



SD.

SAMPLE DOOR

ITEM CODE	DIMENSION
SD	12Wx15Hx3/4D

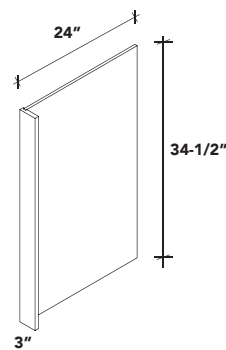


REP.

REFRIGERATOR PANEL

ITEM CODE	DIMENSION
REP2796 1 1/2	27Wx96Hx1-1/2D

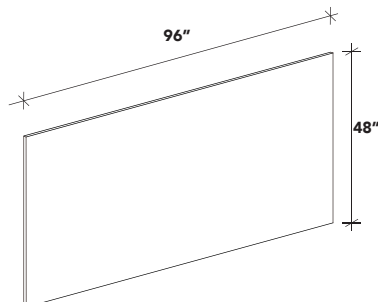
* 1-1/2" return filler included



DWR.

DISHWASHER PANEL

ITEM CODE	DIMENSION
DWR3	24Wx34-1/2HX3D

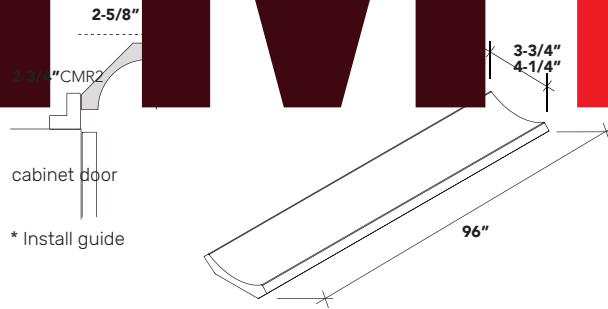


PLY.

ITEM CODE	DIMENSION
PLY-48X96X1/4	96Wx48Hx1/4D
PLY-	96Wx48Hx3/4

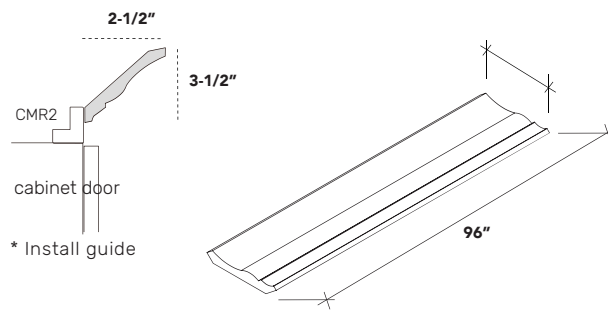
48X96X3/4 D
 * 1/4" thickness panel without edge finished
 * 3/4" thickness panel with all edges finished

TMT RIM



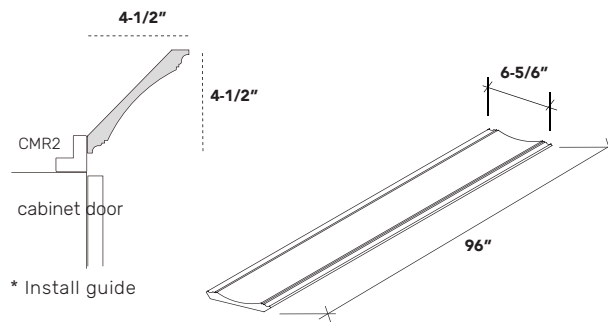
CM4. COVE MOLDING

■ ITEM CODE ■ DIMENSION
CM4 96Wx3-3/4Hx13/16D



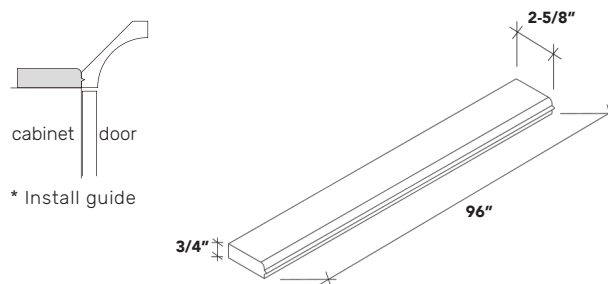
CM6.

CROWN MOLDING ■ DIMENSION
■ ITEM CODE
CM6 96Wx4-1/4Hx11/16D



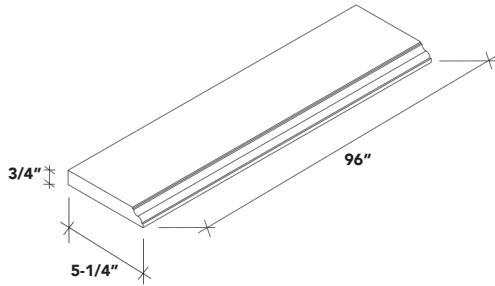
CM7.

CROWN MOLDING ■ DIMENSION
■ ITEM CODE
CM7 96Wx6-5/6Hx11/16D



STRM. STARTER MOLDING

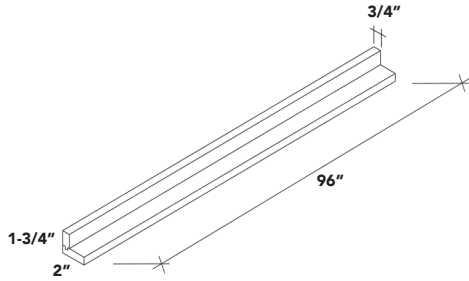
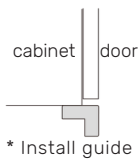
■ ITEM CODE ■ DIMENSION
STRM8 96Wx2-5/8Hx3/4D



BBM.

BASE BOARD MOLDING

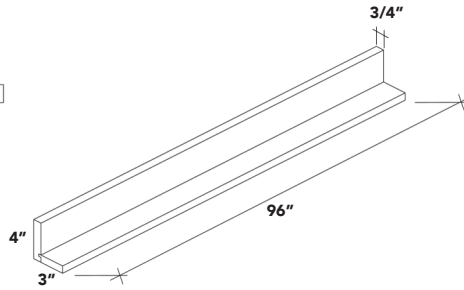
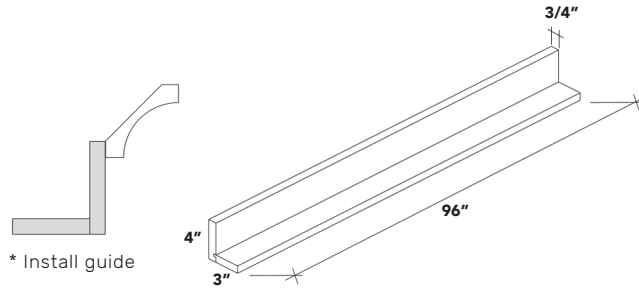
ITEM CODE	DIMENSION
BBM5	96Wx5-1/4Hx3/4D



CMR2.

STARTER MOLDING

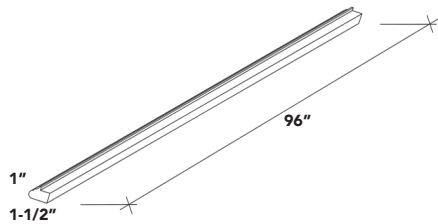
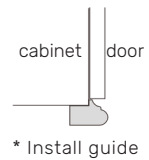
ITEM CODE	DIMENSION
CMR2	96Wx1-3/4Hx2D



CMR4.

STARTER MOLDING

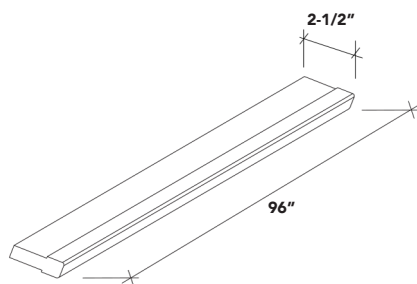
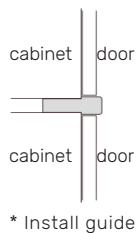
ITEM CODE	DIMENSION
CMR4	96Wx4Hx3D



LRM.

LIGHT RAIL MOLDING

ITEM CODE	DIMENSION
LRM	96Wx1Hx1-1/2D

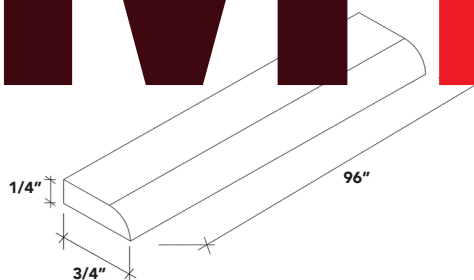


STKM8.

STACKING MOLDING

ITEM CODE	DIMENSION
STKM8	96Wx2-1/2Hx13/16D

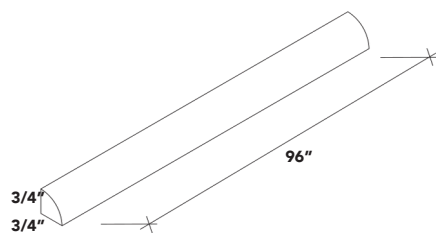
TMT TRIM



SM.
SCRIBE MOLDING

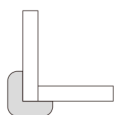
▪ **ITEM CODE**
SM8-S

▪ **DIMENSION**
96Wx1/4Hx3/4D

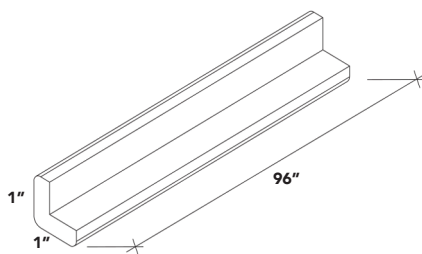


QRM.

QUARTER ROUND MOLDING
▪ **ITEM CODE** QRM
▪ **DIMENSION** 96Wx3/4Hx3/4D

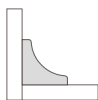


* Install guide

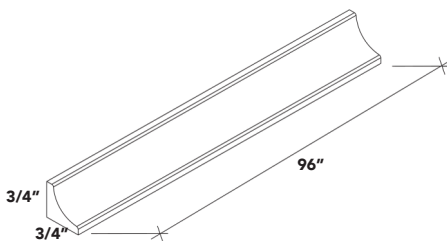


OCM.

OUTSIDE CORNER
▪ **ITEM CODE** OCM8
▪ **DIMENSION** 96Wx1Hx1D



* Install guide



ICM.

INSIDE CORNER
▪ **ITEM CODE** ICM8
▪ **DIMENSION** 96Wx3/4Hx3/4D

LIMIT

10% Cabinetry warrants its Designer Series products to be free from defects in material or workmanship for a period of six years. 10% Cabinetry at their choice, may elect to repair or replace any 10% Cabinetry product covered by this warranty.

This warranty does not apply where items have been improperly stored or improperly installed. This warranty does not cover the following: costs of removing warranted material or the installation of replacement material, natural variations and aging inherent in wood, normal wear and tear or damage/defects caused by mistakes, abuse, negligence or modification in any way. This warranty does not apply to products purchased without finish.

10% Cabinetry reserves the right to inspect claimed defective products. No returns, replacements or repairs may be made without prior written consent. Some replacement parts may vary from those originally supplied and are subject to availability.

This warranty is the sole warranty of 10% Cabinetry and in lieu of all other warranties, express implied, including any implied warranty of merchantability and fitness for a particular use. Labor charges for removal of or installation of warranted material as well as incidental or consequential damages are excluded. We do not assume for us any other liability in connection with the sale of your product.

WHAT IS NOT COVERED BY THIS WARRANTY?

- The natural aging or darkening of wood color, the wood knots, the inherent growth characteristics or variation in wood, We believe this is beauty of nature and not a defect. Absolutely NO RETURN / EXCHANGE for this kind of cabinets or accessories;
- Wear and tear, damage or defects cause by misuse, abuse, negligence, alteration, nonresidential use, storage, or use in non-controlled environment (Recommended 35%-55% humidity, temperature range 17-24o
- Having a heating vent under or in front of cabinets
- Any product used or installed in connection with our products
- This warrants in not qualify for the final sales, clearance sales

SPECIAL DOOR CONSIDERATIONS:

The purchaser agrees to let doors that we warped or have panel shrinkage a 1/4" or less to hang for one season (spring) before replacement is requested. Typically a door will return to its normal position once it is acclimated to temperature and humidity conditions. Prior to requesting a replacement for a door, please be sure the door has been installed properly. To file a claim on this warranty contact your local authorized 10% Cabinetry dealer.

ADDRESS: SUIT 100, 7757 UNION CENTRE BLVD, WEST CHESTER, OH 45011, USA
WEBSITE: <https://www.10percentcabinetry.com/>
E-MAIL: info@10percentcabinetry.com

